

*In-register, high precision lamination by means of Ultra sound and Matching tooled pressure roller. Suitable to laminate up to 5 layers and tested with the following material: 60gr/m<sup>2</sup> non-woven cloth, 25gr/m<sup>2</sup> Melt blown cloth, 50gr/m<sup>2</sup> hot blown cotton, 50gr/m<sup>2</sup> hot blown cotton, 25gr/m<sup>2</sup> Melt blown cloth, 30gr/m<sup>2</sup> non-woven material.*



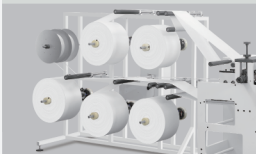
### 5 Plus 1 Unroll System With Automatic End-of-reel Stop

Max Speed (for 5 layers of material incl. nose insertion)	200-300 pcs/min *see note
Roll fed Nose strip insertion	L 5 mm x W 95mm x H 0.5mm of standard nose strip material
Max Web Width	270mm
Die cut register	±0.3mm
Magnetic die-cut cylinder teeth	75T see technical drawing [1]
Face mask Welding wheel	75T see technical drawing [1]
Ultrasonic Fusion unit	15K×3200kw
Max Unwinding Dia.	Φ700mm
Max Waste Dia.	Φ2000mm
Power Supply	Machine: AV, 220V, 50HZ
Overall Diameter (L×W×H)	4985mm×1200mm×2900mm

Reaching any local standard in Mask production, requires materials, production environment, staff and equipment concerned to all meet all testing requirements in accordance with local requirements. These requirements may differ in accordance to the exact usage requirement. Rhyguan recommends that any masks produced on this unit are tested in accordance with local regulations against local standards for the locally intended usage. Rhyguan does neither produce Medical nor Military equipment.

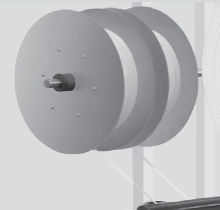
#### UNWIND

unwind with magnetic powder clutch and adjustable tension control. The position of the unwind material is located by the adjustable shaft and plate on the unwind. With the function of reducing the speed when unwind diameter reach the set value. Maximum unwind diameter is 700mm. Optionally upgradeable to a iameter of 1000mm.



#### NOSE STRIP INSERTING UNIT

Independent servo controlled highly efficient dual nose strip insertion and cutting unit to insert simultaneously 2 nose-strip segments (one for each mask) to allow for insertion with an highly accurate positioning and precise cutting.



*Suitable to laminate up to 5 layers and tested*

#### FUSION UNIT

Independent servo controlled fusion unit, featuring a high energy Ultrasonic fusion tool. And including a 75T and 270mm wide engraved fusion roller for standard mask sizes. Customizing or adding extra fusion rollers to create different sizes of face mask is optional.



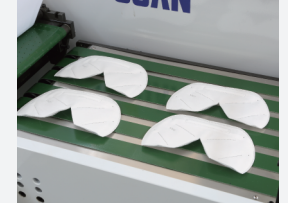
#### FULL ROTARY DIE CUTTING UNIT

Independent servo controlled high power die-cutting station. And including a 75T and 270mm wide die cutting tool for standard mask size. Cutting precision is ± 0.3mm. Customizing or adding extra solid die-cutting cylinders to create different sizes of masks is optional

*High Precision Lamination*

#### WASTE MATRIX

Large waste rewind with a maximum rewind diameter of 2000mm to reducing waste-changes and increasing productivity. Fitted with a Magnetic powder clutch and adjustable tension control.



#### COLLECTION TABLE

Automatic counting and batch separation, with stepless speed regulation